



www.ipy.org

INTERNATIONAL 2007-2008 POLAR YEAR



Polar Educational Resource Book: A Practical Guide for Teachers and Scientists

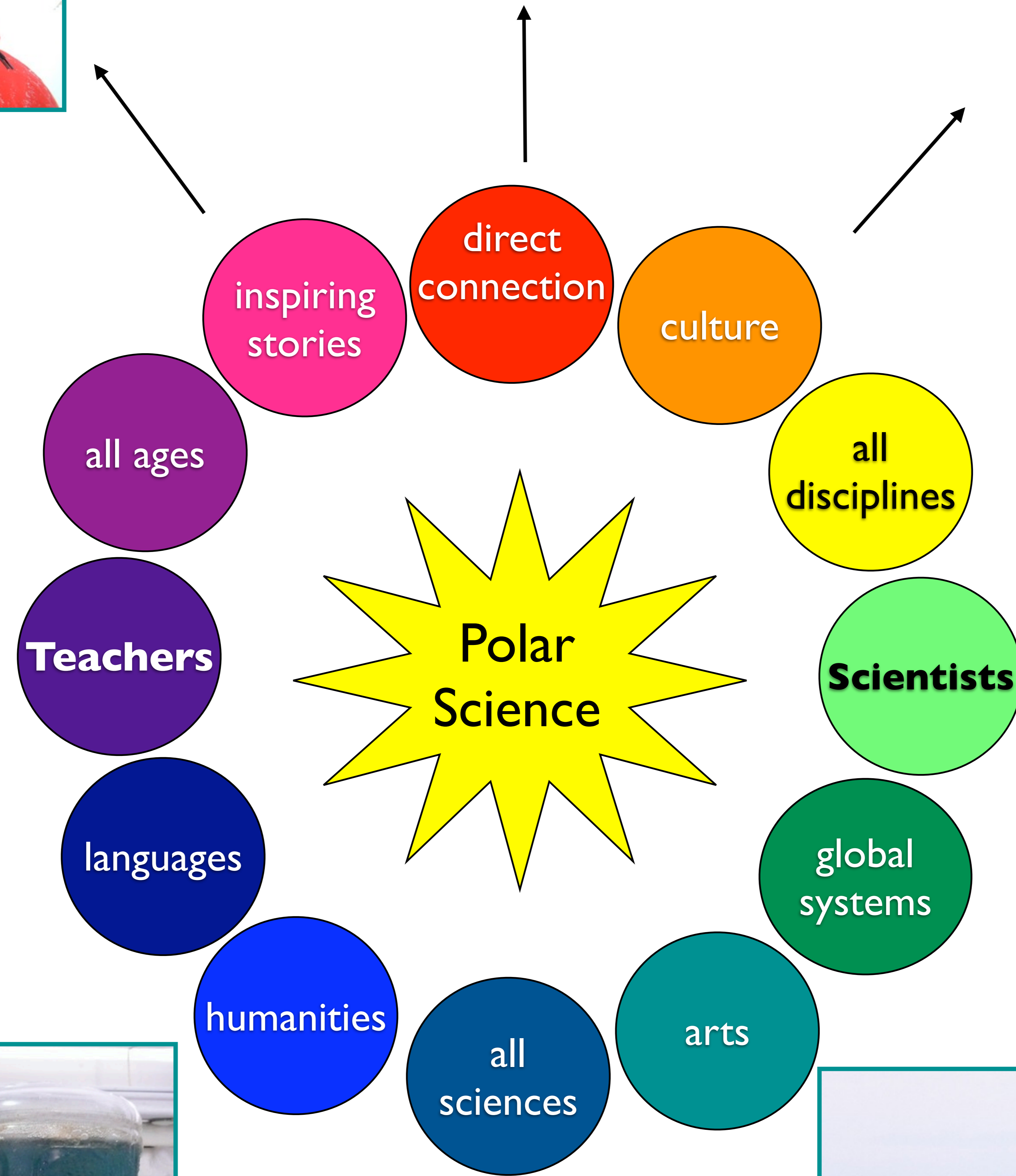
Personal Stories throughout the book sharing how polar researchers and educators have made polar science come alive in the classroom



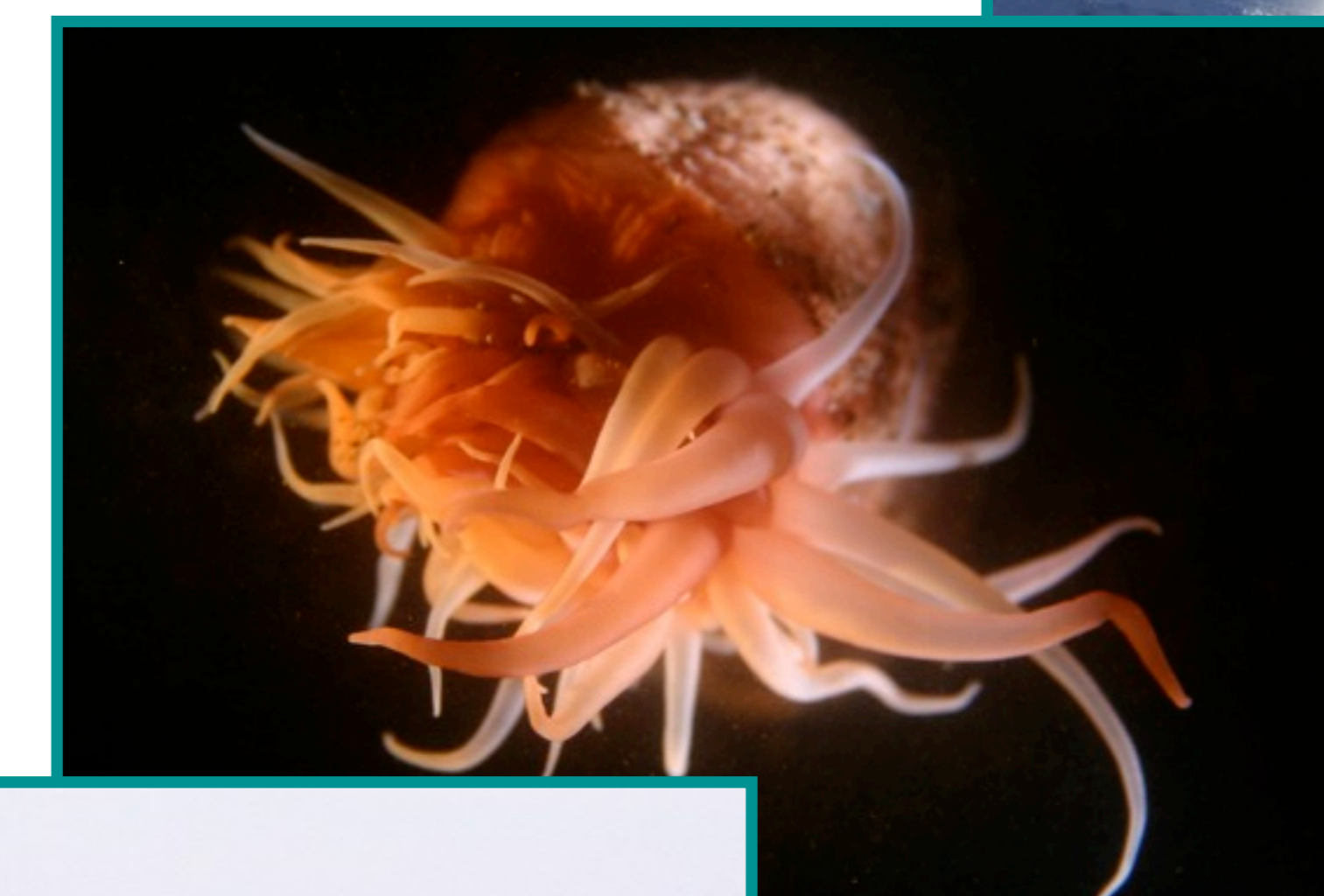
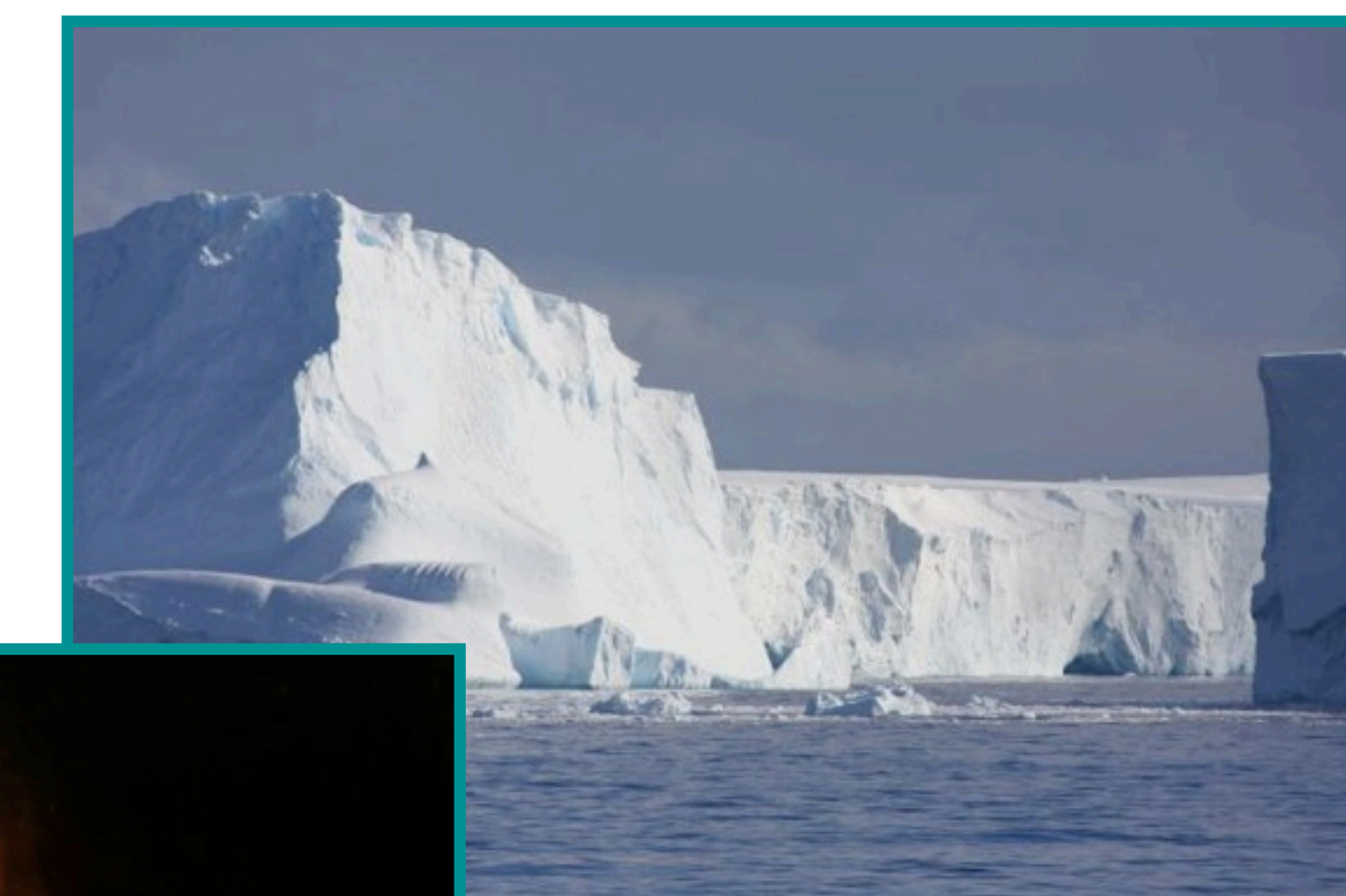
Educational Activities inspired by IPY, developed by researchers and educators, presented for everyone to explore.



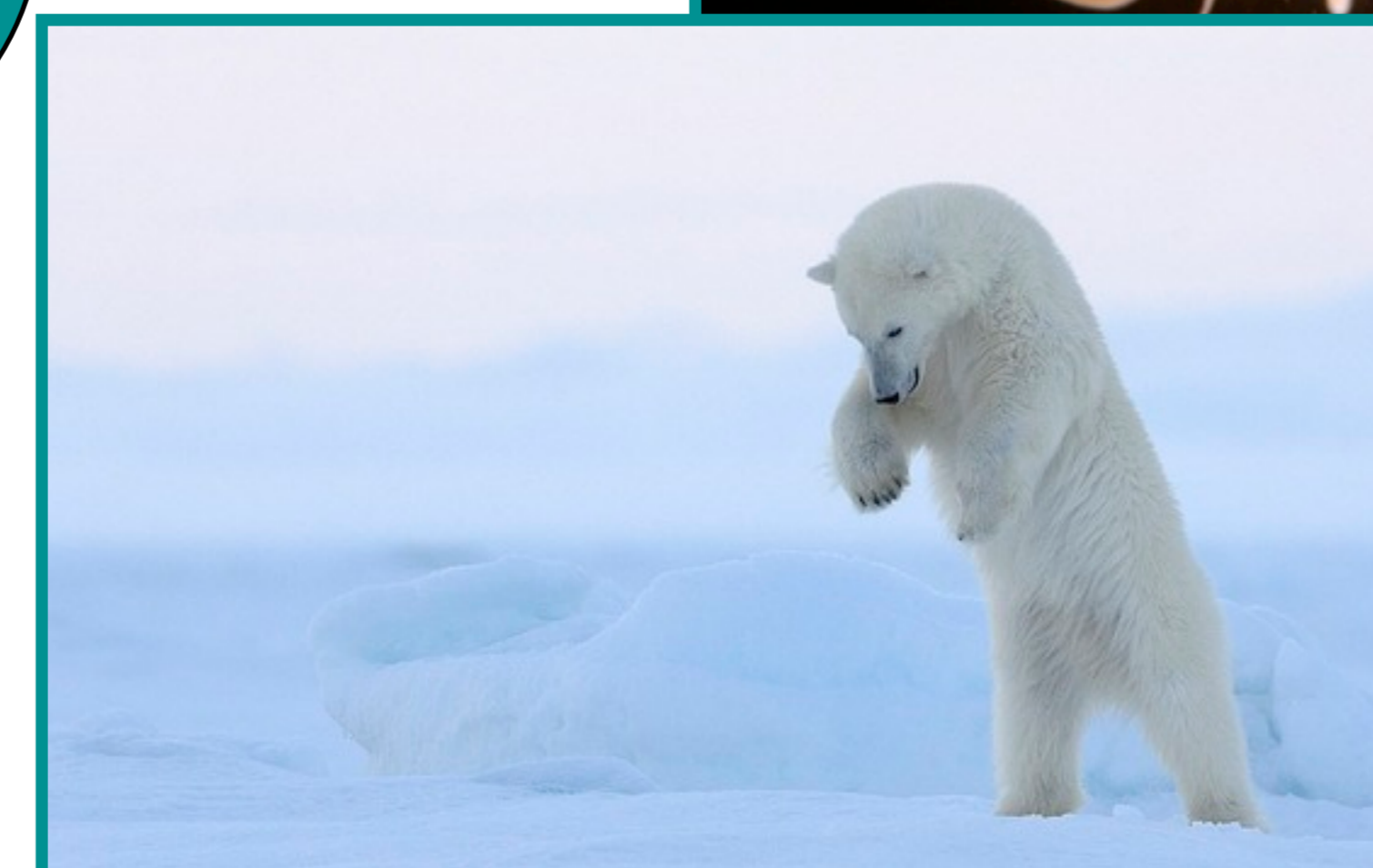
A collaboration between the Association of Polar Early Career Scientists and the IPY International Programme Office Education Working Group



Tips & Tricks to help researchers enter a classroom, share their world, and inspire a new generation of scientists.



Introduction to the polar regions and the wide range of polar research



Polar Educational Resource Book Steering Committee

Miriam Almeida	Brazil	Teacher	prof_miriamrc@hotmail.com
Jenny Baeseman	USA	APECS Director	jbaeseman@gmail.com
Lucette Barber	Canada	Schools on Board	barberL@cc.umanitoba.ca
Joan Eamer	Norway	UNEP Polar Programme	Joan.Eamer@grida.no
Louise Huffman	USA	ANDRILL Educ'n/Outreach	lhuffman@andrill.org
Bettina Kaiser	Germany	Polar Historian	bettina-kaiser@gmx.ne
Rene Malherbe	Netherlands	Science Educator	rjmalherbe@home.nl
Nicola Munro	UK	IPY IPO Education Liaison	ipy1@bas.ac.uk
Liz Murphy	Australia	Education /Comms	liz.murphy@internode.on.net
Lars Poort	Greenland	Science Curriculum Advisor	lars.poort@gmail.com
Melanie Raymond	NZ	Antarctic Biologist	melanieraymond@yahoo.co.uk
Donald Reid	NZ	Educator/ Journalist	donald@informationmatters.co.nz
Rhian Salmon	UK	IPY IPO Educ'n/Outreach	ipy.ras@gmail.com
Elena Sparrow	USA	University of the Arctic	esparrow@iarc.uaf.edu
Mieke Sterken	Belgium	Polar Geographer	mieke.sterken@UGent.be
Jose Xavier	Portugal	Polar Biologist	jxavier@ualg.pt
Sandra Zicus	Australia	Int'l Antarctic Institute	Sandra.Zicus@utas.edu.au

We hope to publish the book in June 2010. For more information, or to discuss publication, please contact Rhian Salmon on ipy.ras@gmail.com.